



Seeing the Future: 7 Decisions to Go From Idea to Successful Scale Business

Dr. Stefan Heck
Founder, CEO at Nauto

Company Background

- Silicon Valley AI company
- Founded in 2015
- \$195M in funding (Greylock, Playground, Softbank, DNX, Toyota, GM, BMW)
- 1.5 Billion AI-processed miles
- 50-80% collision reduction
- 800 commercial fleets
- US, Japan, and EU

My Background

- Founded Stanford Solar Car Project in 1989
- PhD in neural networks and philosophy
- McKinsey senior partner - internet, semiconductors, cleantech
- Stanford consulting professor

What does Nauto do?



Nauto's AI synthesizes the full context of driver behavior, vehicle motion & external risks



Driver Behavior



Vehicle Motion



External Risks



1.5 Billion AI-processed miles

Identify a *worthwhile* problem



Global Development Goals

1. Food, nutrition, and water
2. Poverty, inequality, refugees, access to work
3. Disease: cancer, heart, diabetes, AIDS, pandemics
4. Climate change: energy, transport sectors
5. Lack of trust: fake news, rise of fascism
6. Education access: especially for poor and girls
7. Ageing
8. Atomic energy & nuclear weapons
9. Democracy, peace, and human rights

vs.

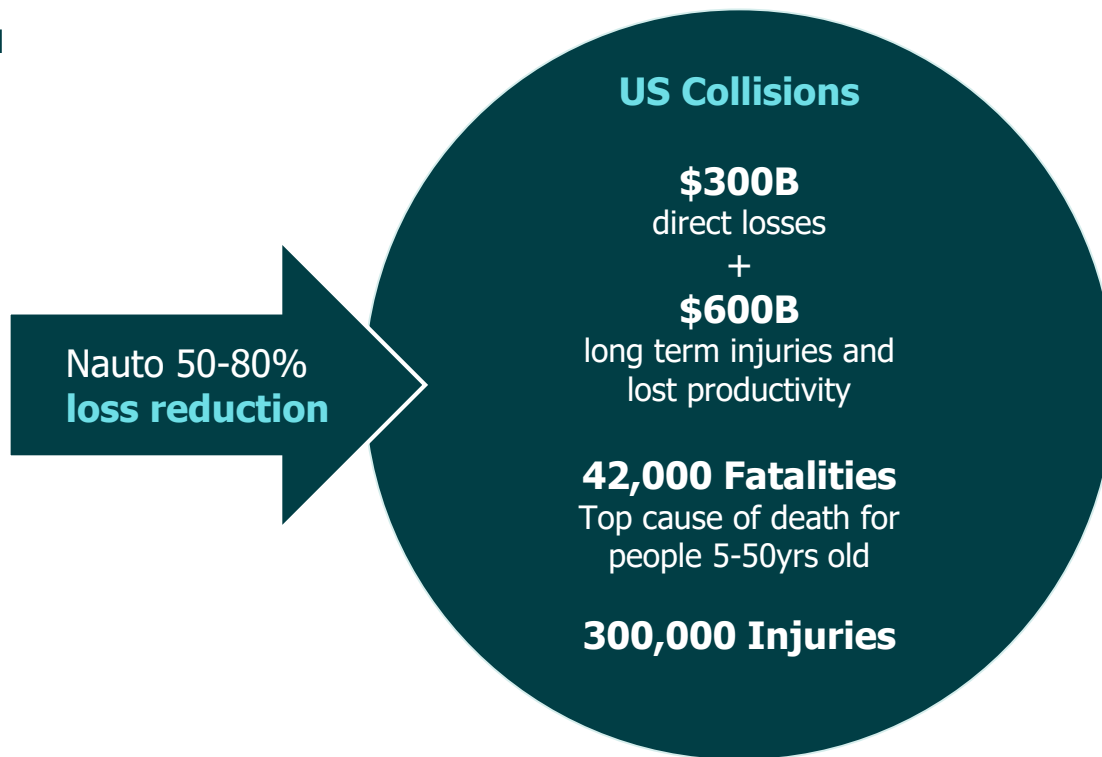
Top AI Companies

1. Higher click-through
2. Engagement
3. Automating paperwork
4. Voice/text/call center
5. Fraud/credit
6. Cybersecurity

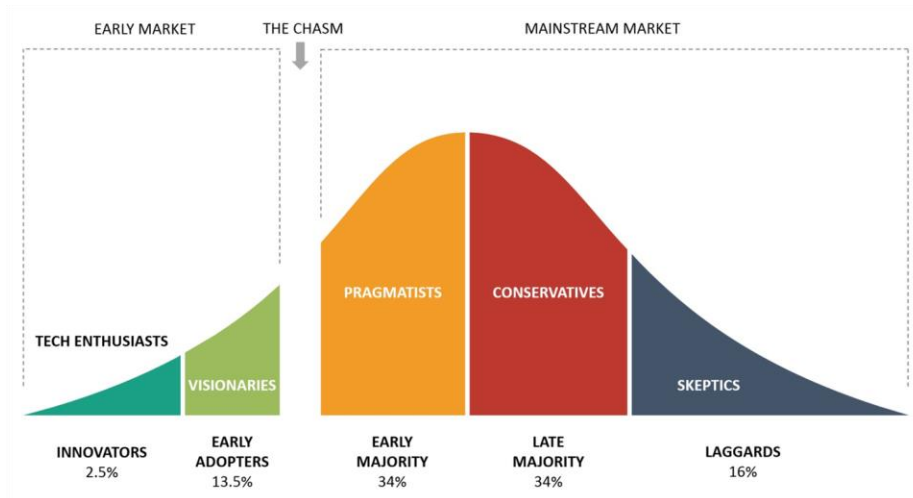
Nauto is solving a trillion dollar problem



Annual ARR \$ TAM



Identify your customer



- B2B vs B2C
- SMB vs Enterprise
- US vs international
- Buyer vs seller vs marketplace
- Charge for platform, for service, for transaction

SaaS Predictive-AI Platform for Transportation



Vehicle
Manufacturers

Risk/insurers

Fleets

Drivers

Cloud AI

Learn at massive scale from best and worst drivers and rare events



Delivery



Services



Utility & Energy



Ridesharing, Bus, Taxi

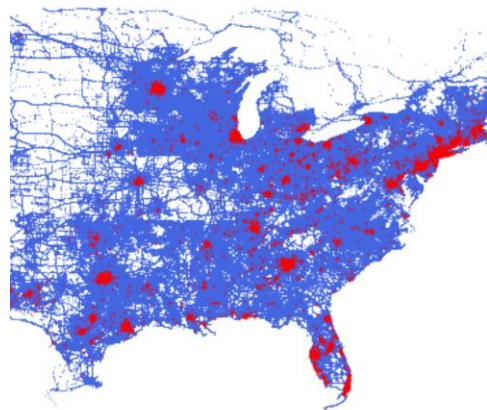
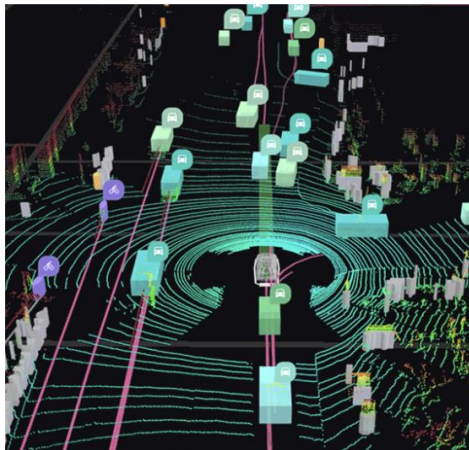


EV & AV

Edge AI

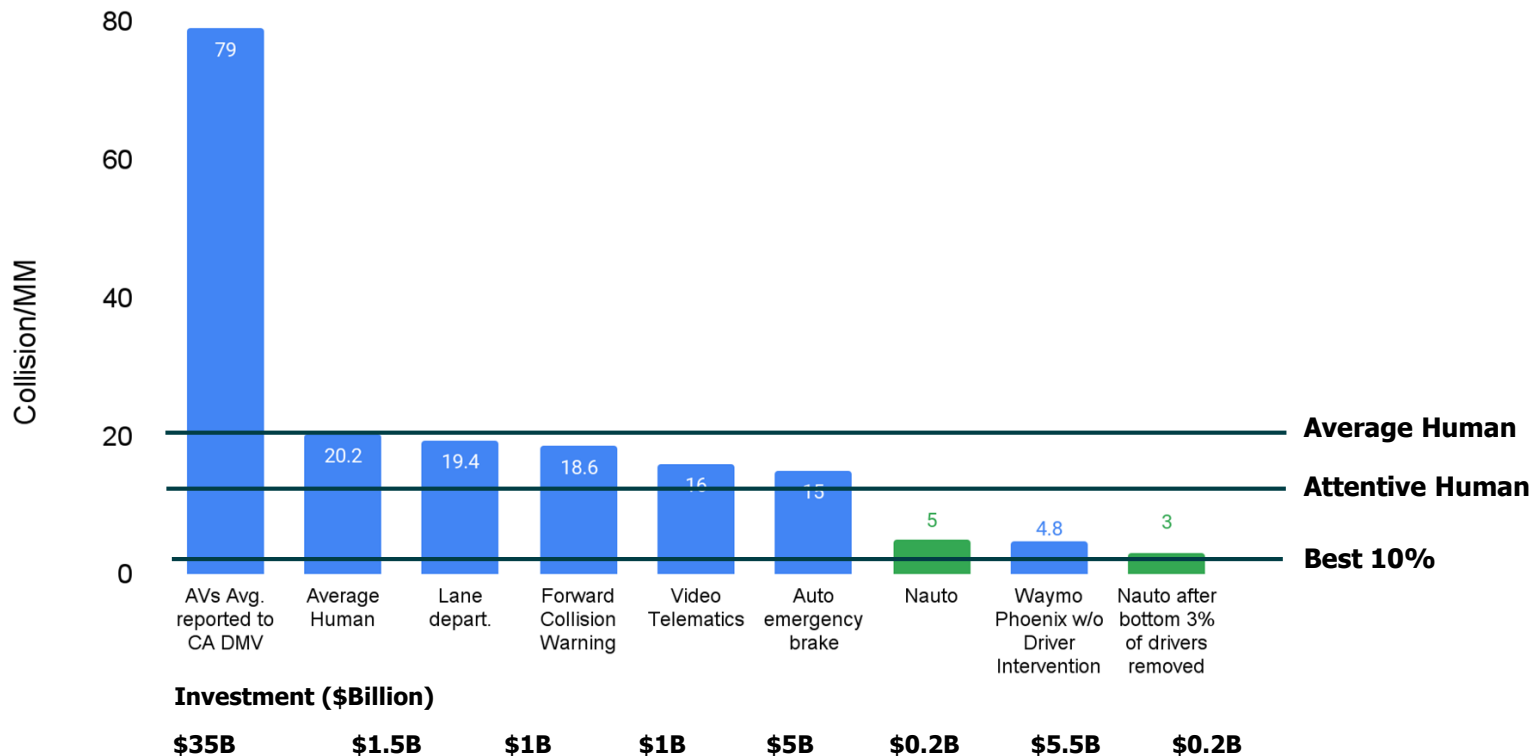
Fuse perceptions | Prevent collisions | Minimize driver risk

Human vs. machine - or human is part of system?



Collision_Type	Cost/ (000)	Cost/ MM	look_down_dist	speeding	holding_obj	tailgating	cornering	seatbelt	cellphone	dist_other:cellphone	acceleration	look_down	cornering:braking	speeding:cornering	speeding:look_down	braking
Total	8.2	101.8	0.47				0.10						0.08	0.01		0.09
Rear-Ending	13.5	56.9	0.92		0.17	0.43							0.09	0.03		0.09
Intersection	9.4	32.4											0.03			0.05
Head_On	15.5	12.5	0.47		0.19								0.06			0.13
Turning	9.9	11.8	2.30	0.02	0.12								0.03			0.03
Sideswipe	5.2	9.5											0.05			0.04
Pedestrian	67.6	9.3	0.58										0.01			0.03
Hit_Parked_Vehicle	3.1	7.1	0.86		0.24											0.05
																0.08
																0.02

Collision rates achieved by drivers + tech



Learning from the best, coaching the riskiest



Worst Drivers:

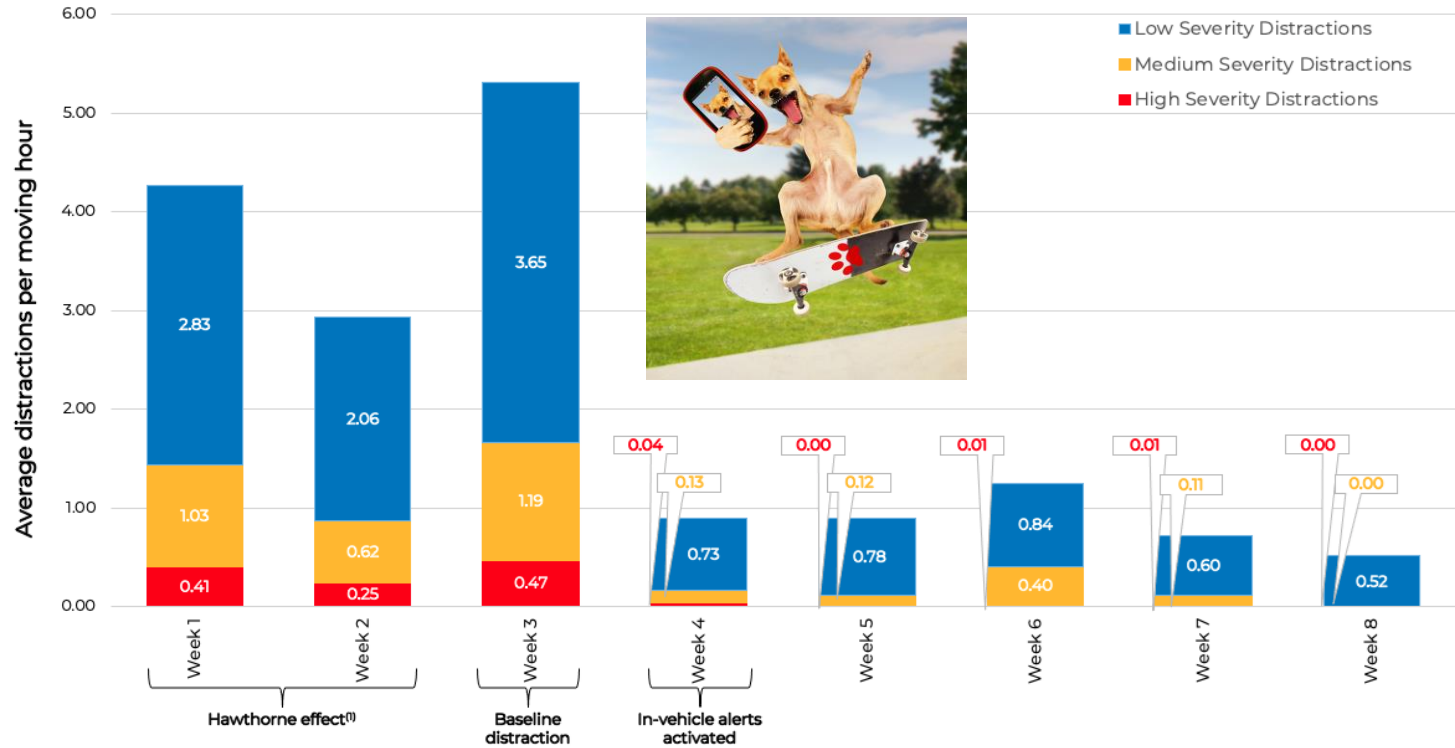
- Commercial 3 collisions this year
- Teen: 14 collisions this year



Best Drivers:

40 years without a collision

Teaching old dogs new tricks



Learning what is compelling product market fit?



Watch the Video



[Nauto Predictive Vehicle Safety Technology](#)

6. Competitive Advantage



1. Team/tech talent?
 2. Tech/patents?
 3. Data?
1. Team members churn
 2. Tech gets copied in 2-3 years max
 3. Data can be a lead, but others will figure out how to get more data, sometimes surreptitiously or with less ethics

**Your only real advantage is
LEARNING SPEED.**

**Set up your architecture and pipeline to
iterate and improve rapidly.**

Resources for AI in AVs/ADAS



More on Nauto

[Nauto Website](#)

[Nauto Careers](#)

[More on Nauto Tech](#)

More on AVs

[AV Roadmap](#)

[Data on Human Driving](#)

[AI Readiness](#)

[Driver Shortage](#)