

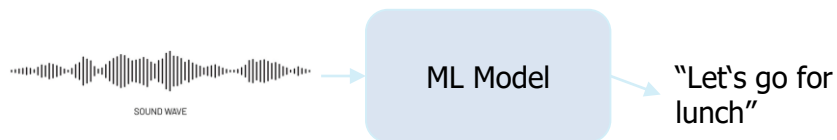
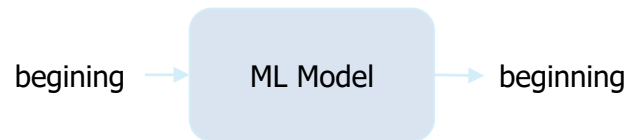
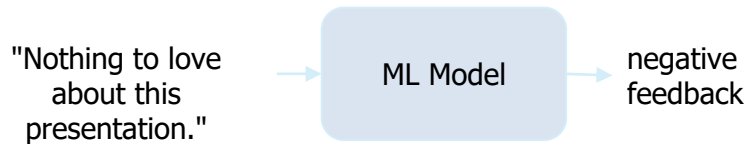
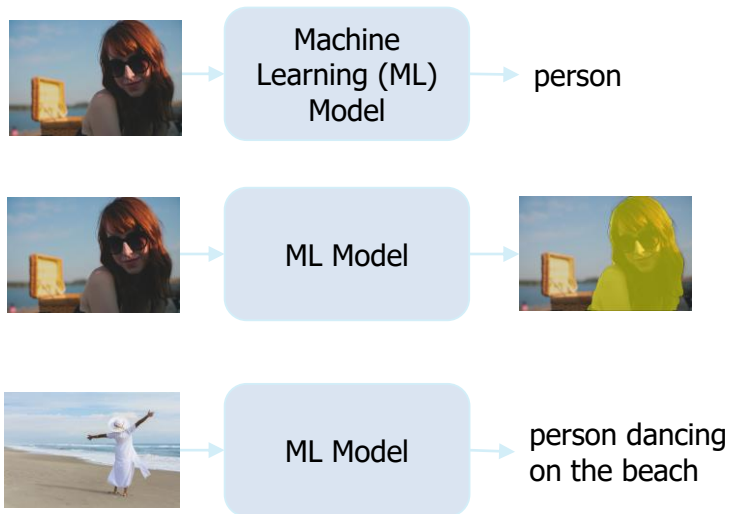


Introduction to Computer Vision with Convolutional Neural Networks

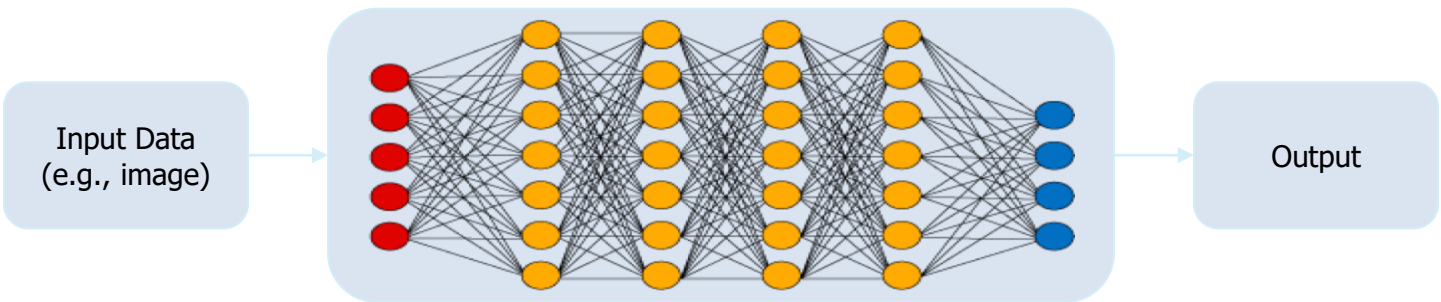
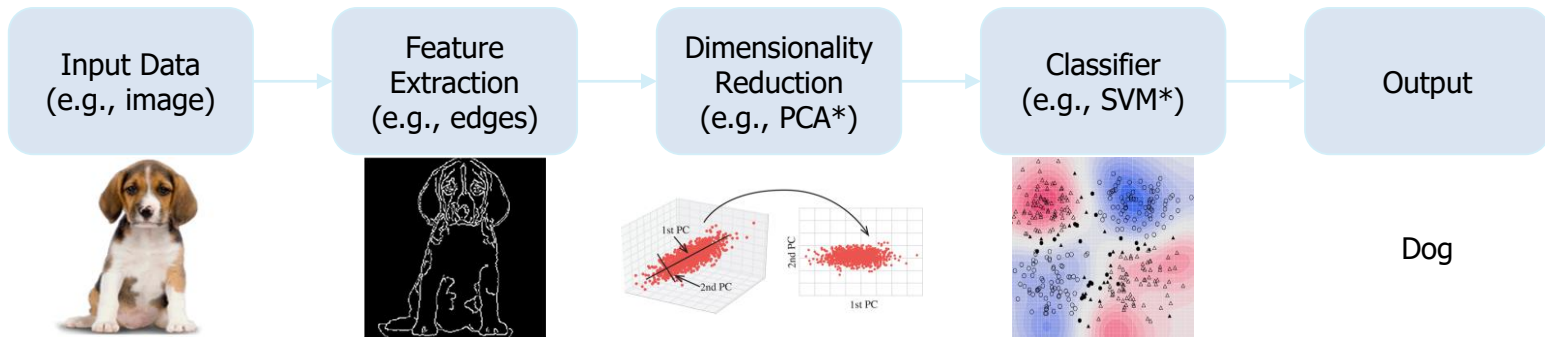
Mohammad Haghghat

- High level introduction to AI
 - Conventional vs. deep learning
- Neural networks and deep learning
 - Fully connected networks
 - Elements of a neural network
 - Neural network training
- Convolutional neural networks (CNNs)
 - Building blocks of CNNs
 - Applications of CNNs
 - Popular CNN architectures
 - Mobile CNN architectures

High-level introduction to AI



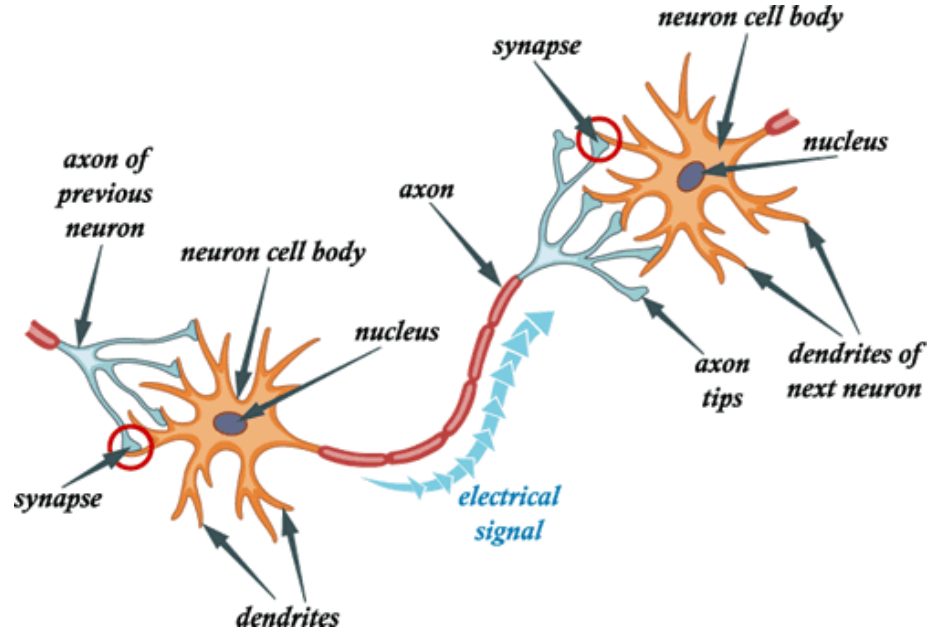
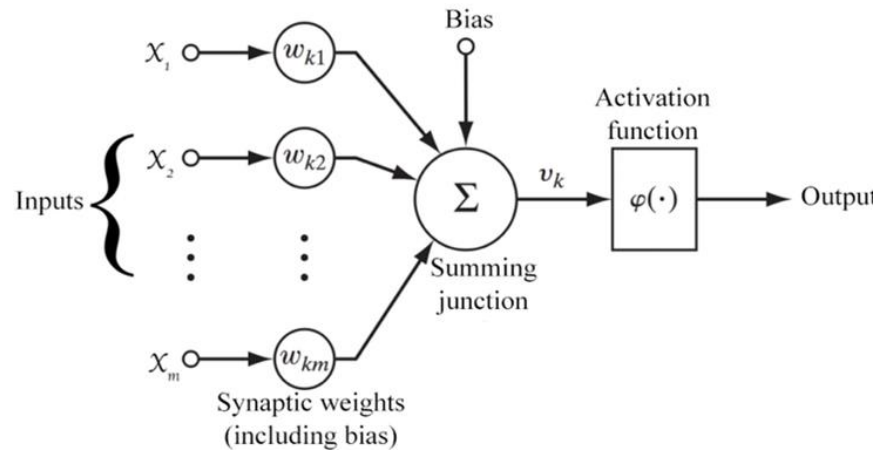
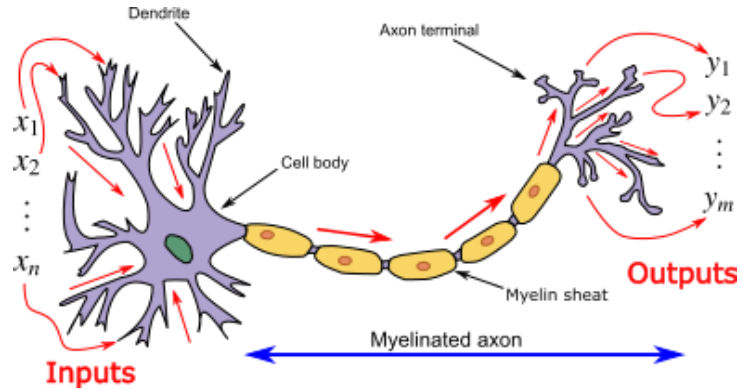
Classical learning vs deep learning



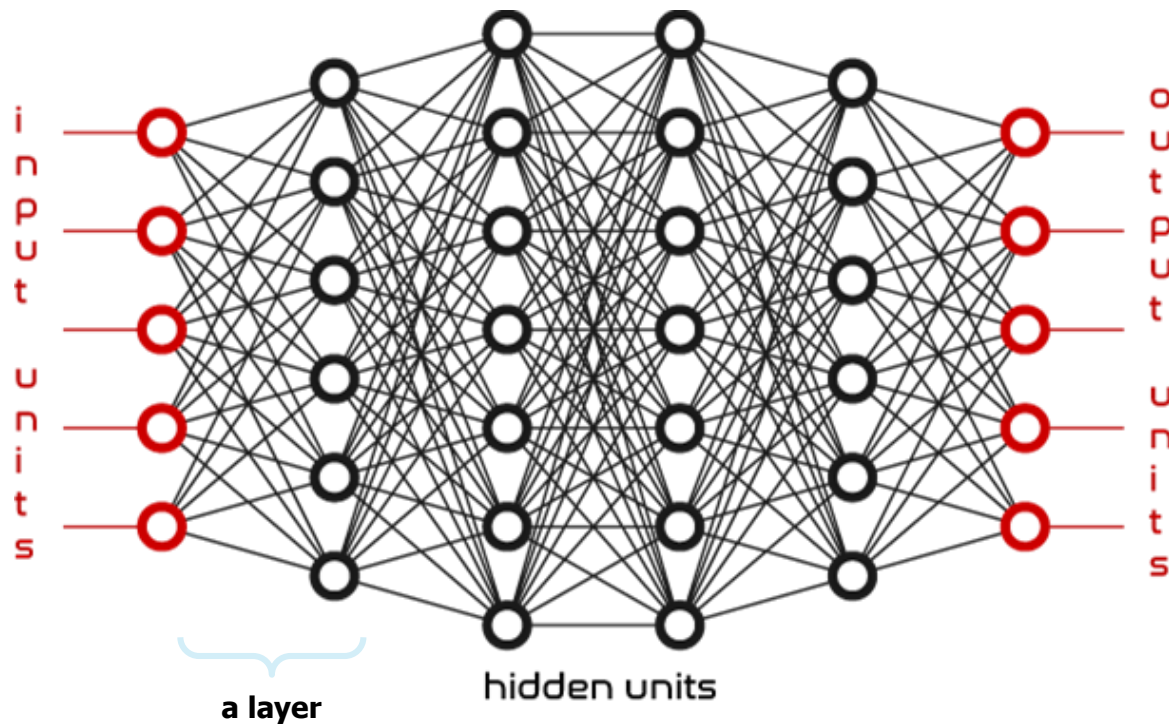
*PCA: Principal Component Analysis

*SVM: Support Vector Machines

What are neurons?

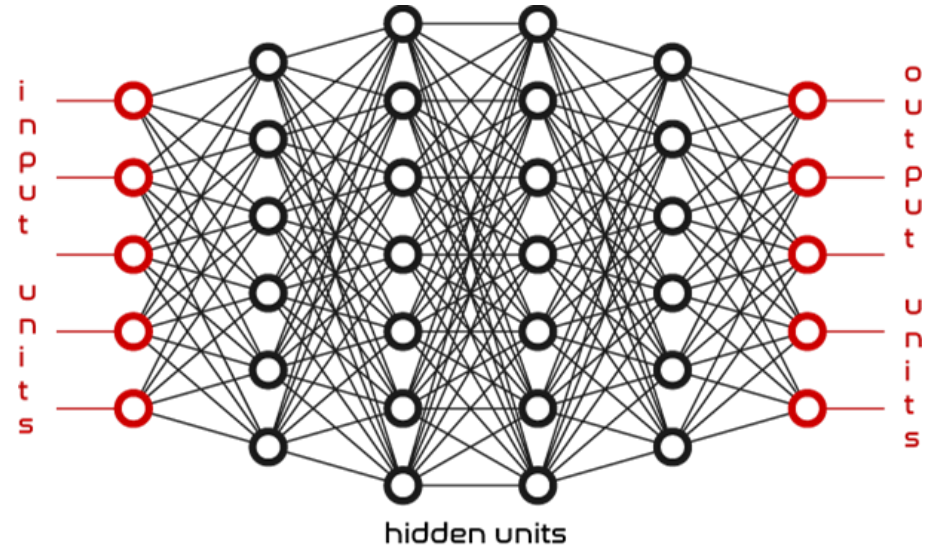
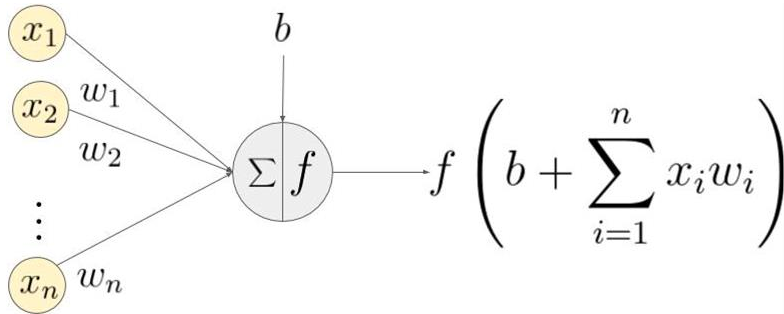


... and what are neural networks?

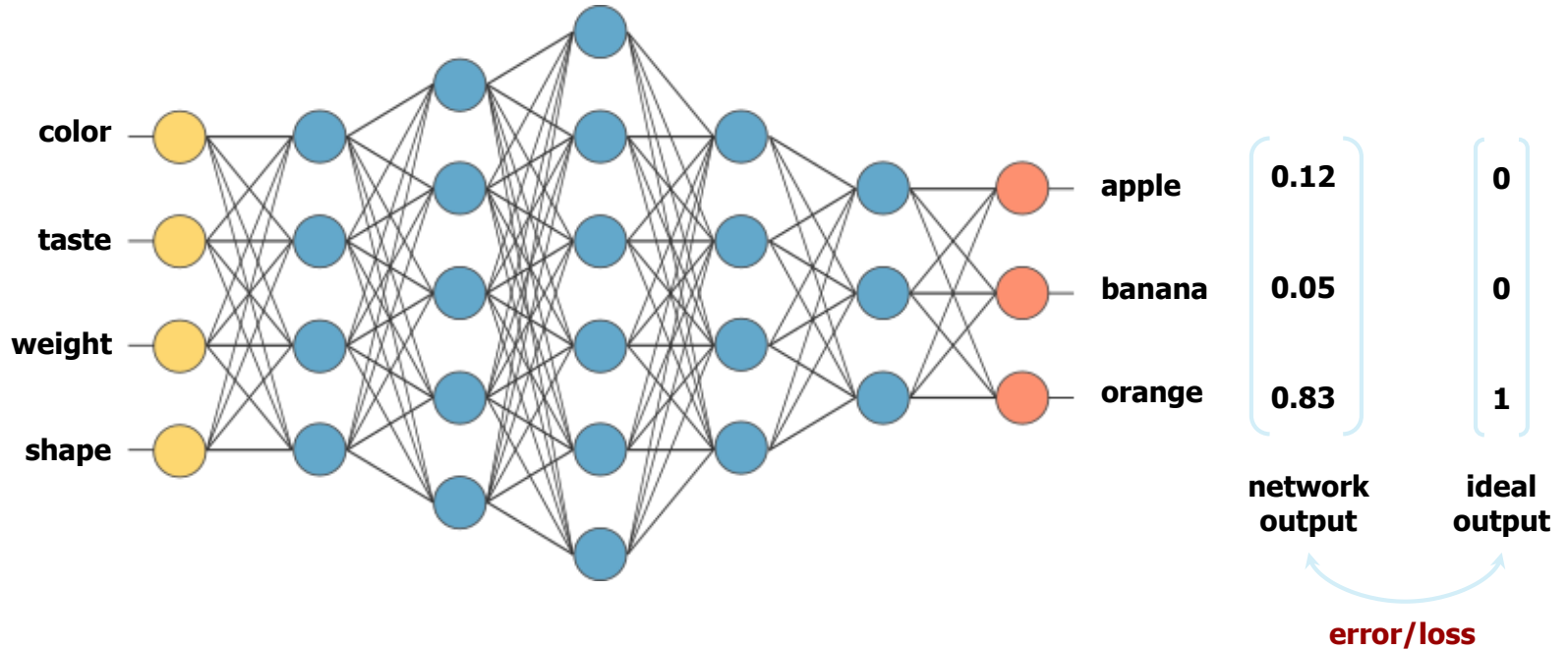


Universal Approximation Theorem

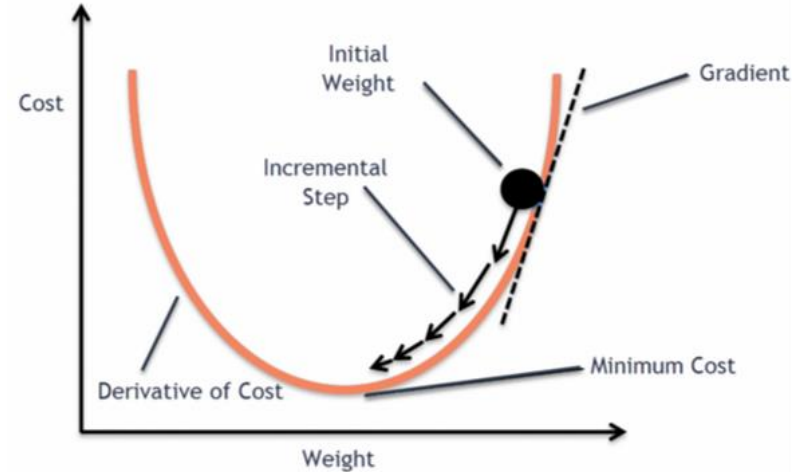
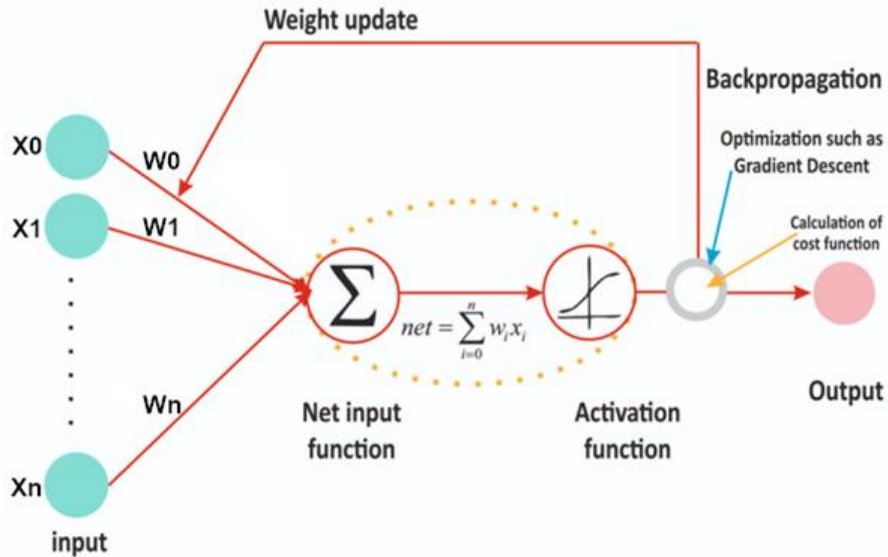
A one-hidden-layer neural network with enough neurons can approximate **any** continuous function within the given input range.



Neural network-based classifier

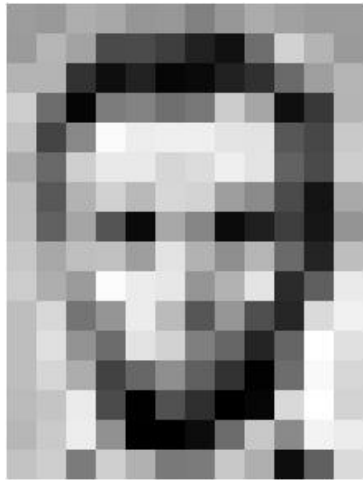


Loss and gradient descent algorithm



How does a computer see an image?

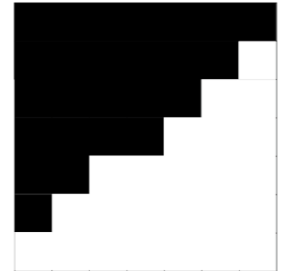
- Gray-level pixel: 8 bit ranging between 0 and 255
- Color pixel: Three 8-bit channels for red, green & blue (RGB)



157	153	174	168	150	152	129	151	172	161	155	166
155	182	163	74	75	62	83	17	110	210	180	154
180	180	50	14	84	6	10	83	48	106	159	181
206	109	5	124	131	111	120	204	166	15	56	180
194	68	137	251	237	239	239	228	227	87	71	201
172	105	207	233	233	214	220	239	228	98	74	206
188	88	179	209	185	215	211	158	139	75	20	169
189	97	165	84	10	168	134	11	31	62	22	148
199	168	191	193	158	227	178	143	182	106	36	190
205	174	155	252	236	231	149	178	228	43	95	234
190	216	116	149	236	187	86	150	79	38	218	241
190	224	147	108	227	210	127	102	36	101	255	224
190	214	173	66	103	143	96	50	2	109	249	215
187	196	235	75	1	81	47	0	6	217	255	211
183	202	237	145	0	0	12	108	200	138	243	236
195	206	123	207	177	121	123	200	175	13	96	218

157	153	174	168	150	152	129	151	172	161	155	166
155	182	163	74	75	62	83	17	110	210	180	154
180	180	50	14	84	6	10	83	48	106	159	181
206	109	5	124	131	111	120	204	166	15	56	180
194	68	137	251	237	239	239	228	227	87	71	201
172	105	207	233	233	214	220	239	228	98	74	206
188	88	179	209	185	215	211	158	139	75	20	169
189	97	165	84	10	168	134	11	31	62	22	148
199	168	191	193	158	227	178	143	182	106	36	190
205	174	155	252	236	231	149	178	228	43	95	234
190	216	116	149	236	187	86	150	79	38	218	241
190	224	147	108	227	210	127	102	36	101	255	224
190	214	173	66	103	143	96	50	2	109	249	215
187	196	235	75	1	81	47	0	6	217	255	211
183	202	237	145	0	0	12	108	200	138	243	236
195	206	123	207	177	121	123	200	175	13	96	218

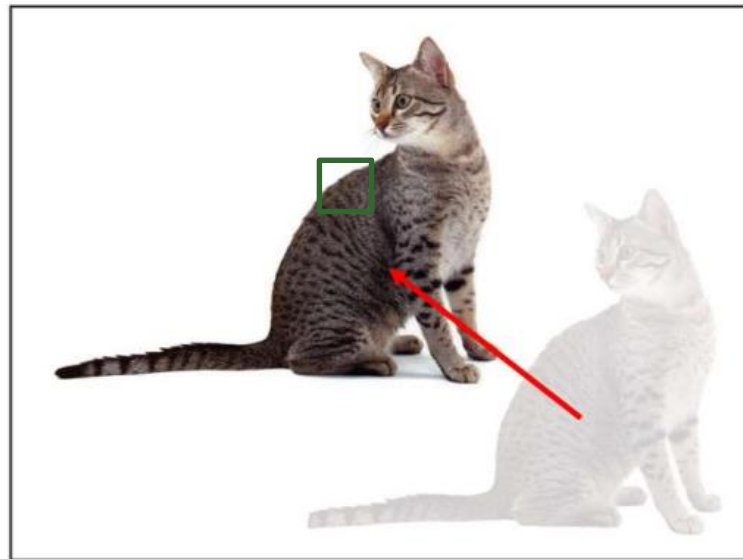
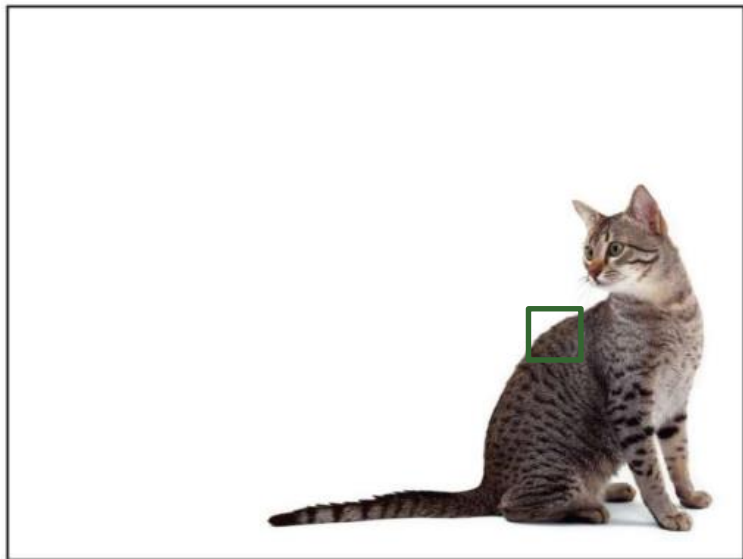
0	0	0	0	0	0	0
0	0	0	0	0	0	255
0	0	0	0	0	255	255
0	0	0	0	255	255	255
0	0	255	255	255	255	255
0	255	255	255	255	255	255
255	255	255	255	255	255	255



**How computer
sees the edge**

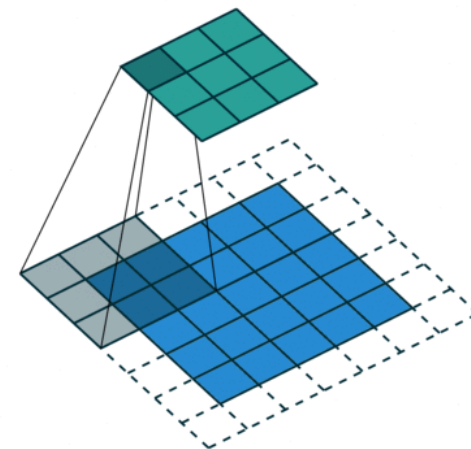
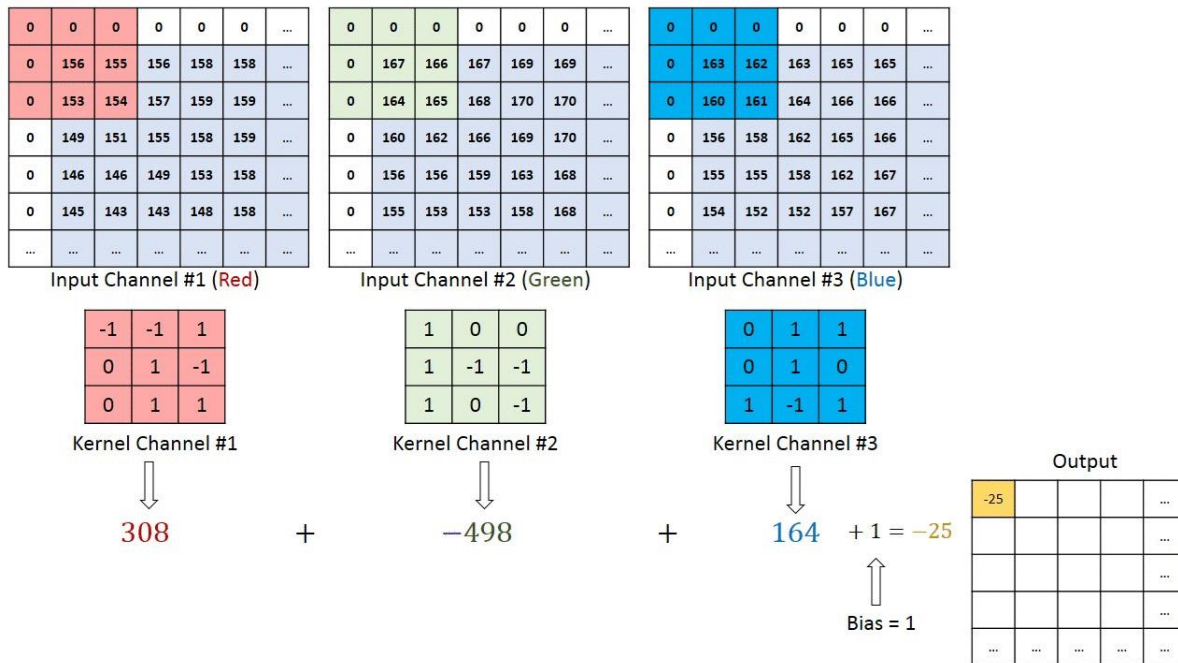
**How we sees
the edge**

What is different about image data?



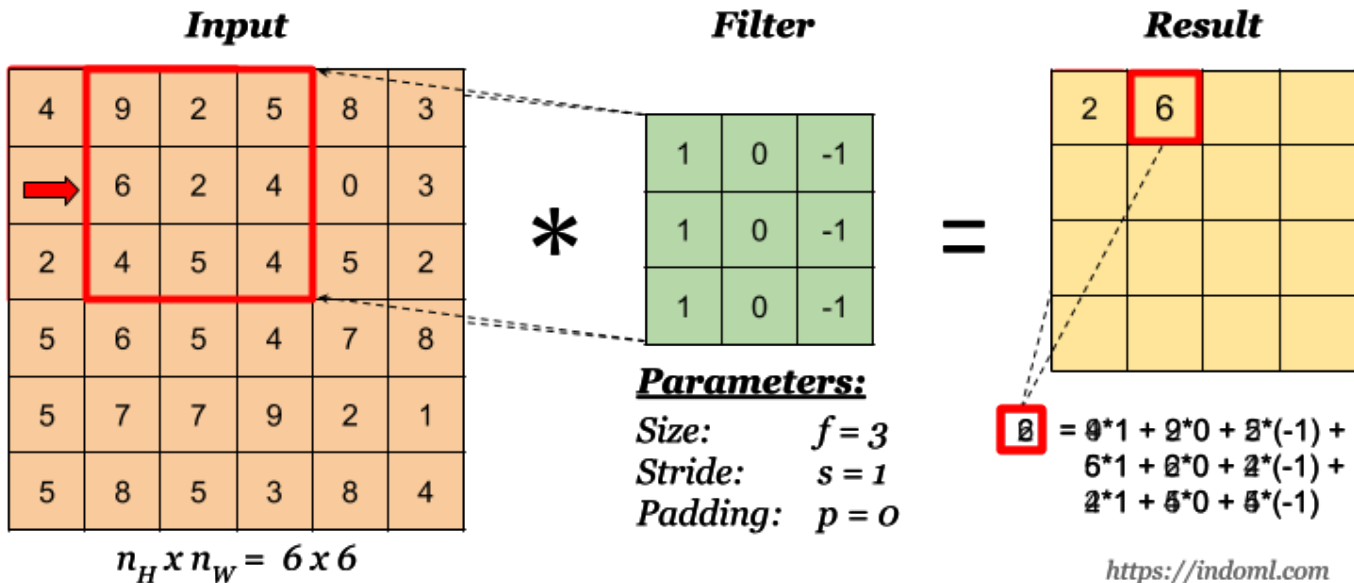
Introduction to CNNs

Convolutional layer



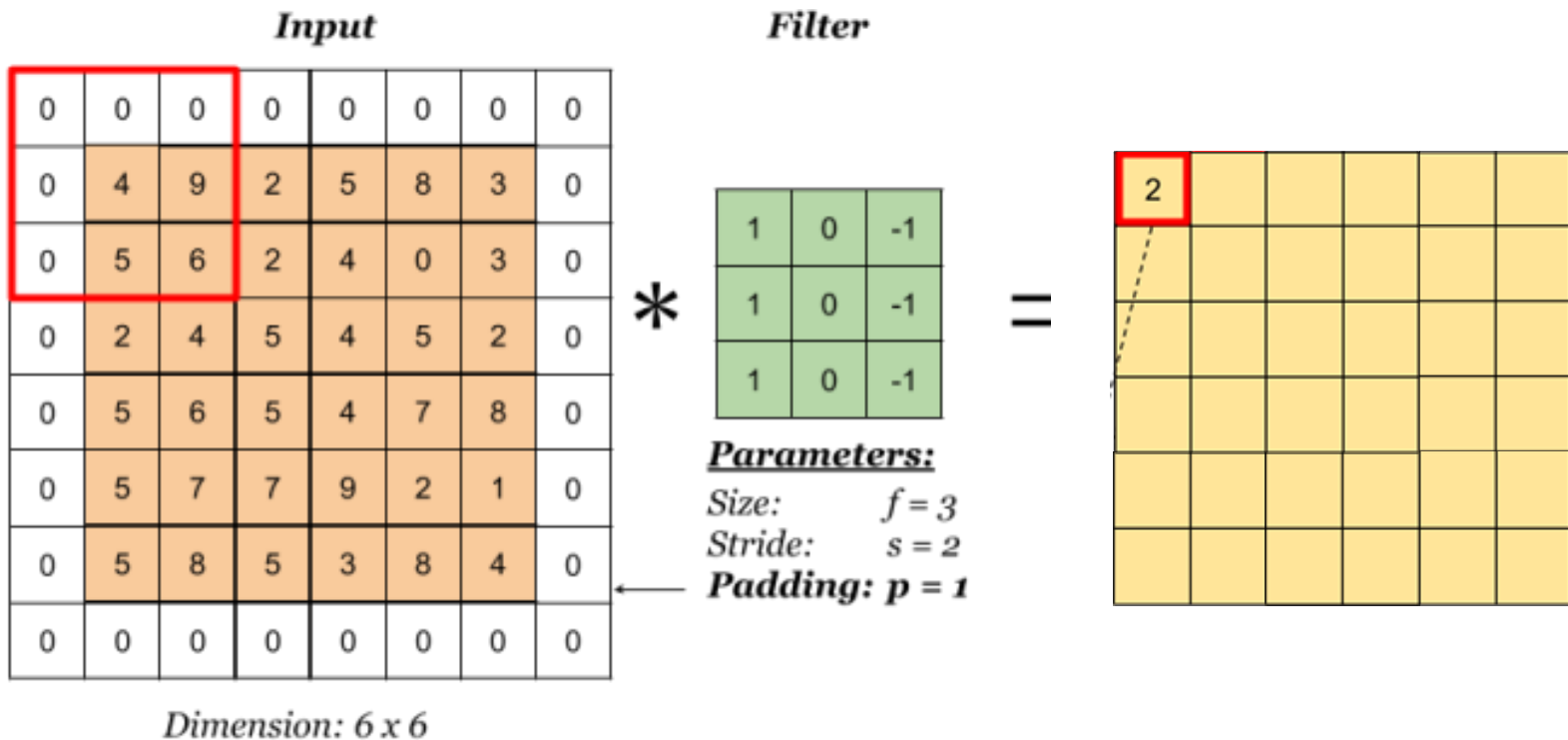
Building blocks of CNNs

Convolution operation



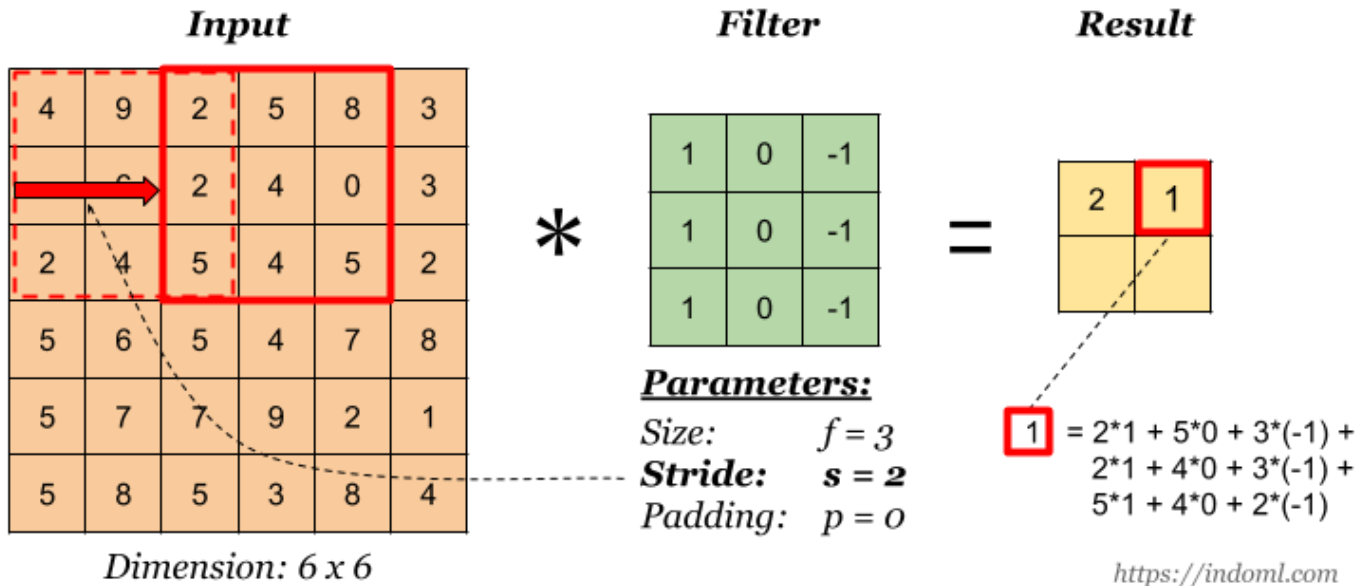
Building blocks of CNNs

Padding: same vs. valid



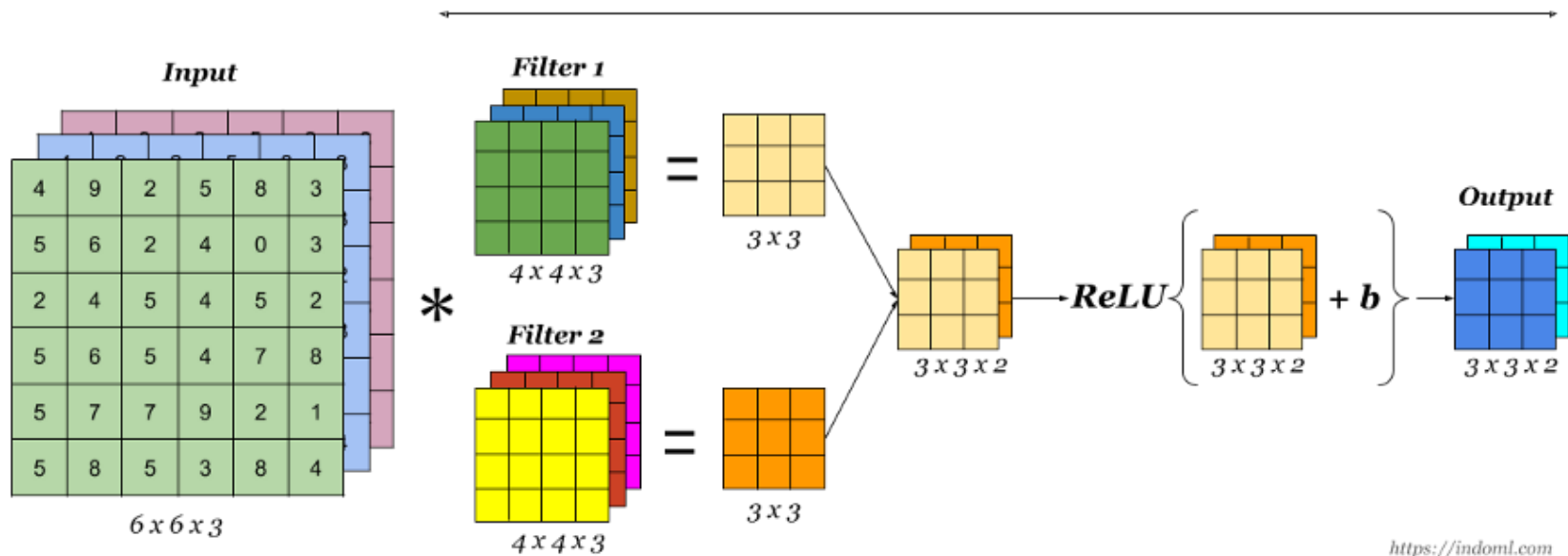
Building blocks of CNNs

Stride



Building blocks of CNNs

A Convolution Layer

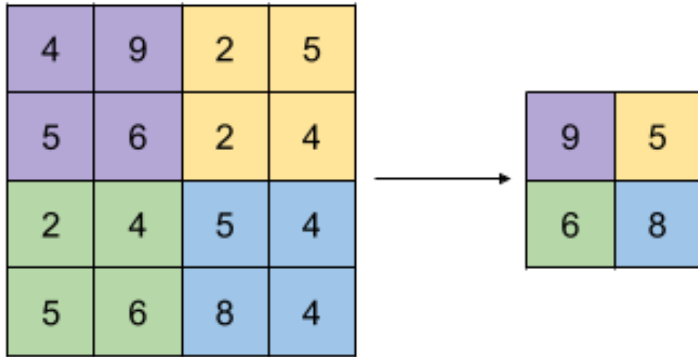


<https://indoml.com>

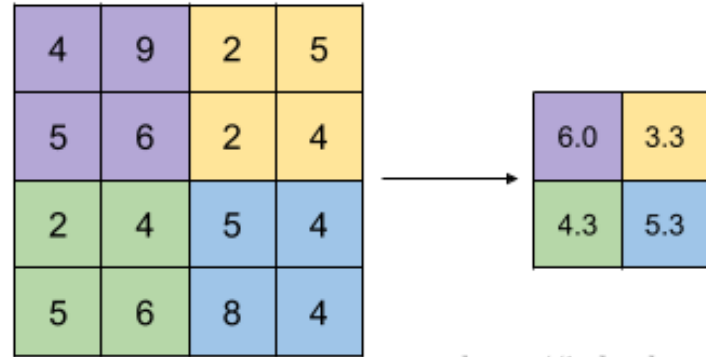
Building blocks of CNNs

Pooling layer

Max Pooling



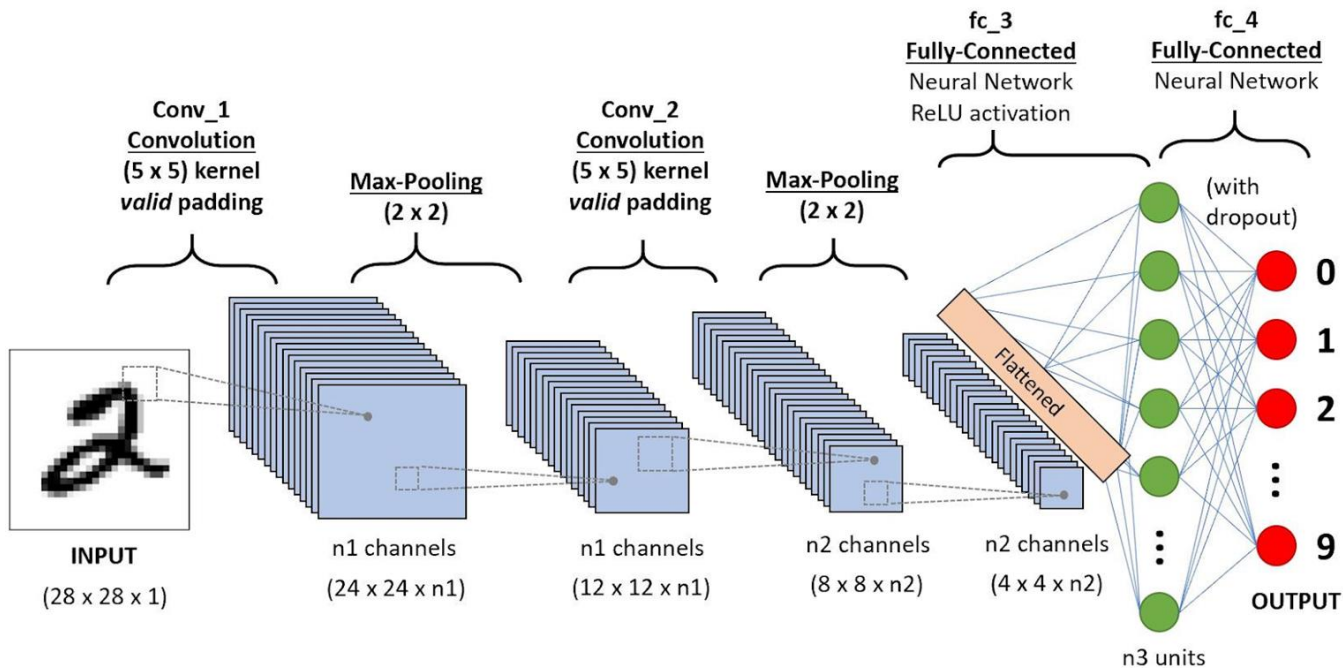
Avg Pooling



<https://indoml.com>

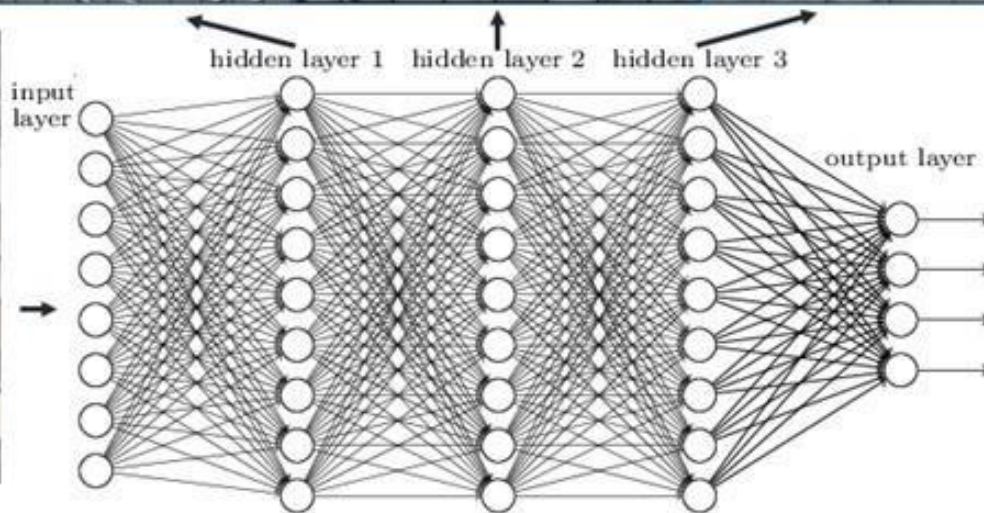
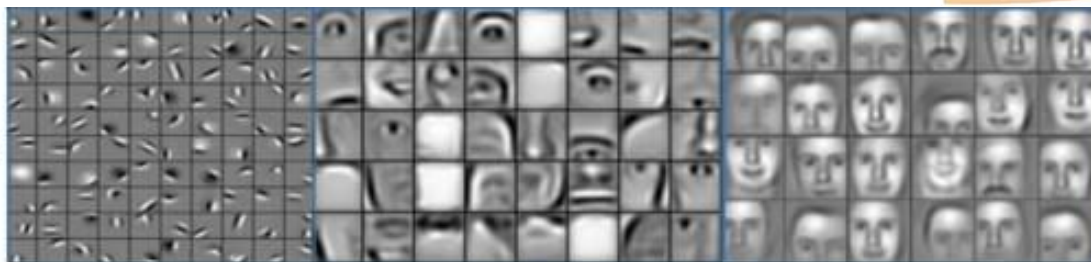
Building blocks of CNNs

A multi-layer CNN



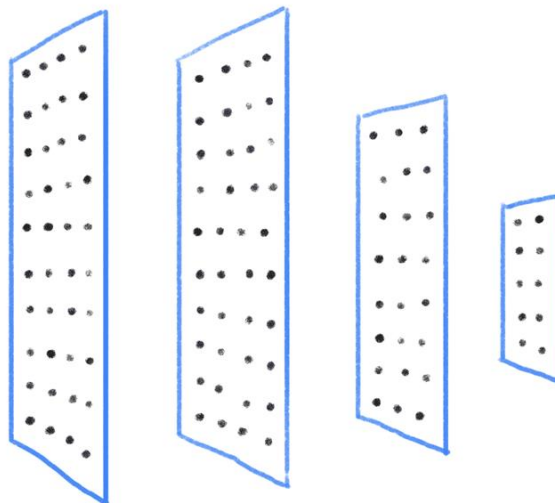
Deep learning is representation learning (a.k.a. feature learning)

Deep neural networks learn hierarchical feature representations



Applications of CNNs

Image Classification

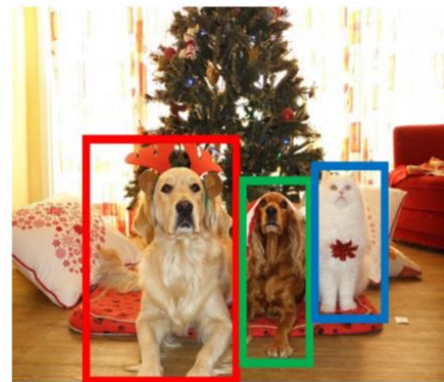
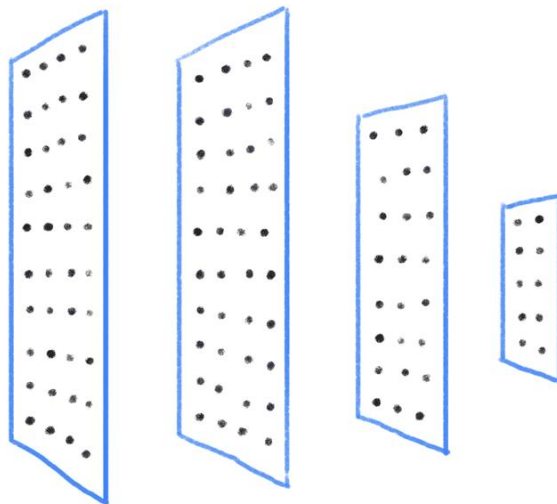


$$P_{dog} = 0.9$$

$$P_{cat} = 0.1$$

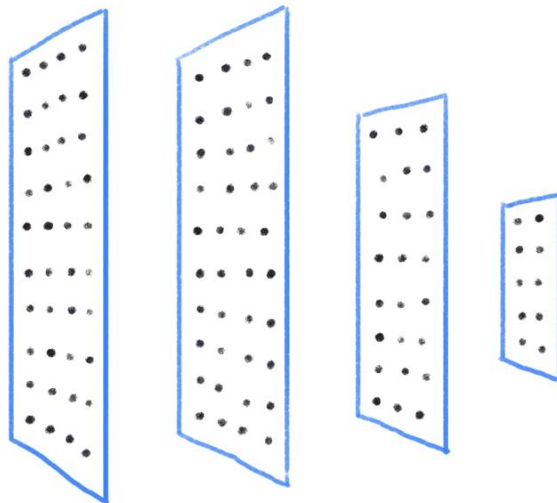
Applications of CNNs

Object Detection



DOG, **DOG**, **CAT**

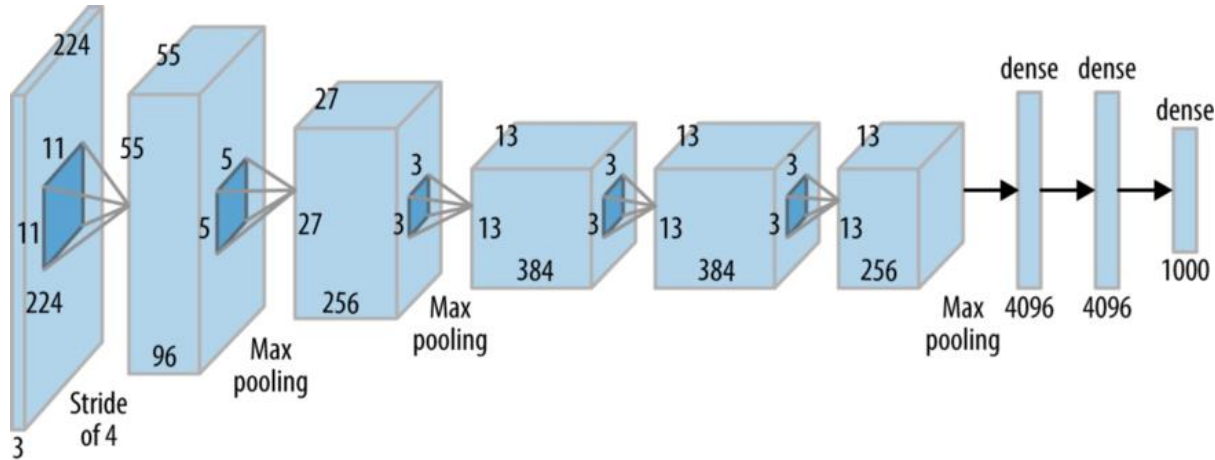
Instance Segmentation



DOG, DOG, CAT

Popular CNN architectures

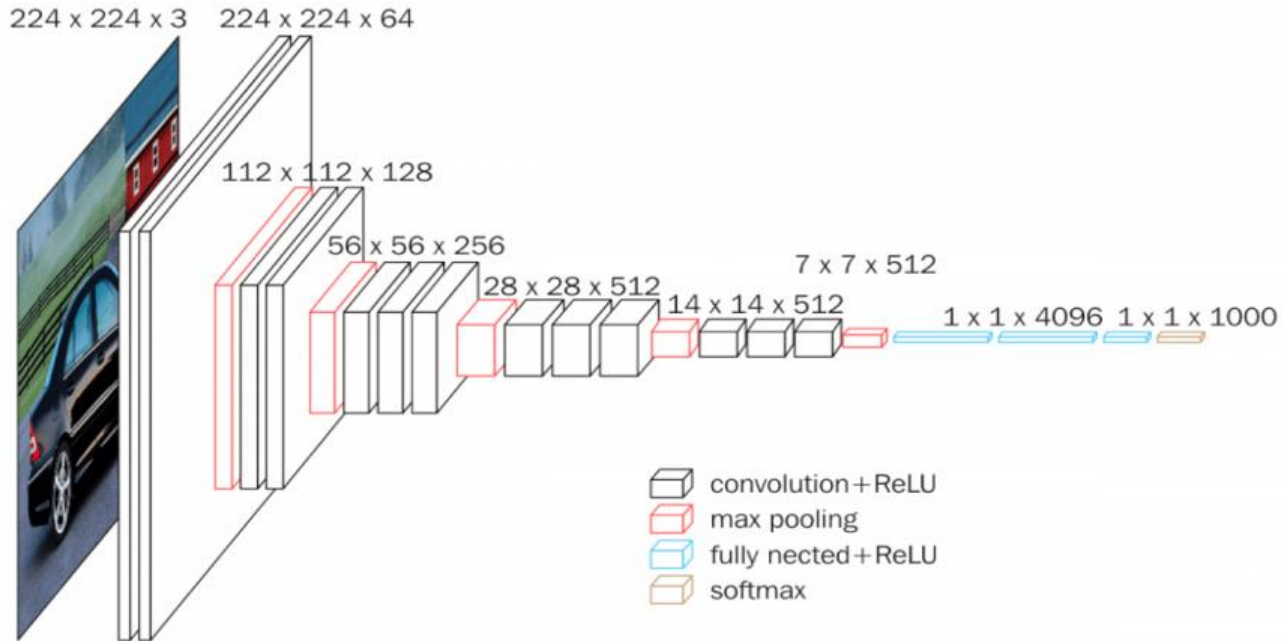
AlexNet (2012) – Top-5 Error 15.3% on ImageNet



“The neural network, which has **60 million parameters** and 500,000 neurons, consists of **five convolutional layers**, some of which are followed by **max-pooling layers**, and **two globally connected layers** with a final **1000-way softmax**.”

Popular CNN architectures

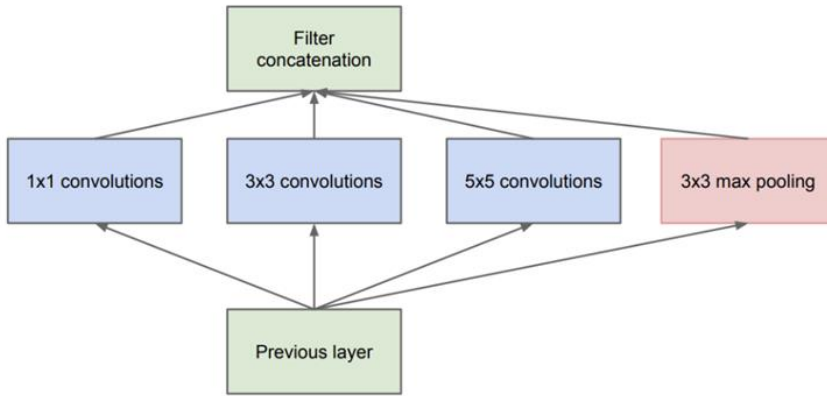
VGG16 (2014) – Top-5 Error 7.32% on ImageNet



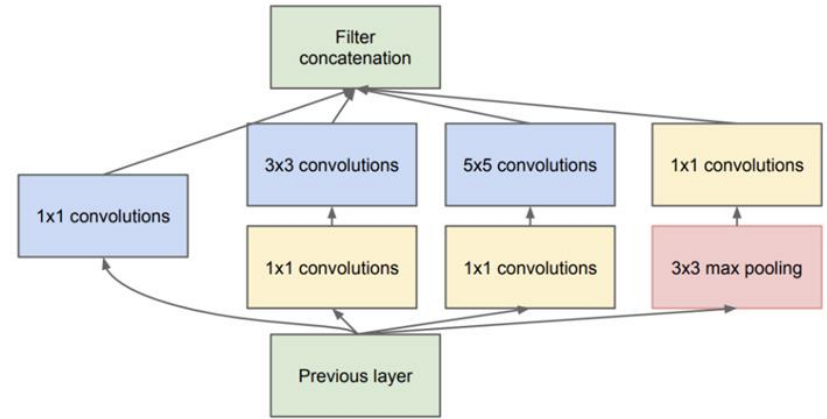
Popular CNN architectures

Inception (2014)

Motivation: let the network decide what filter size to put in a layer



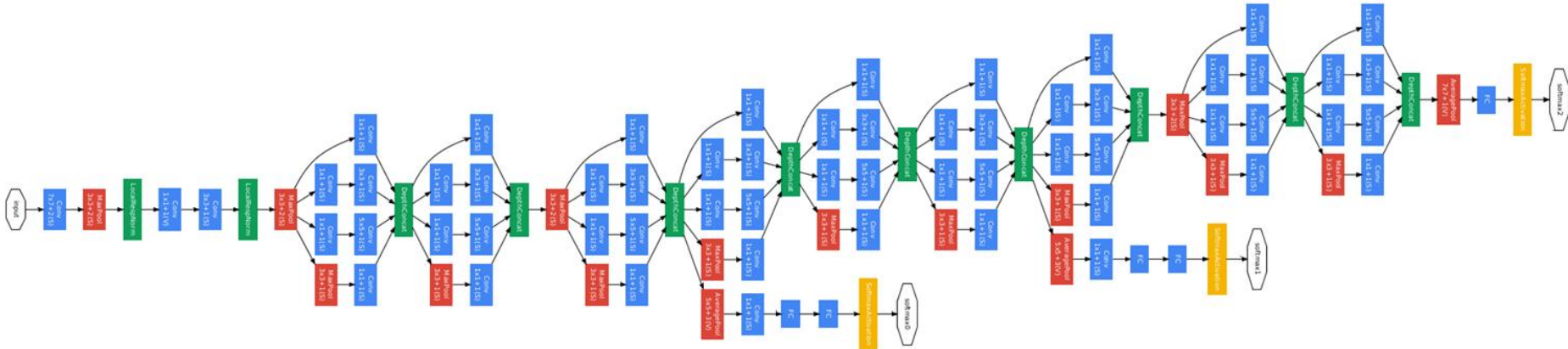
(a) Inception module, naïve version



(b) Inception module with dimension reductions

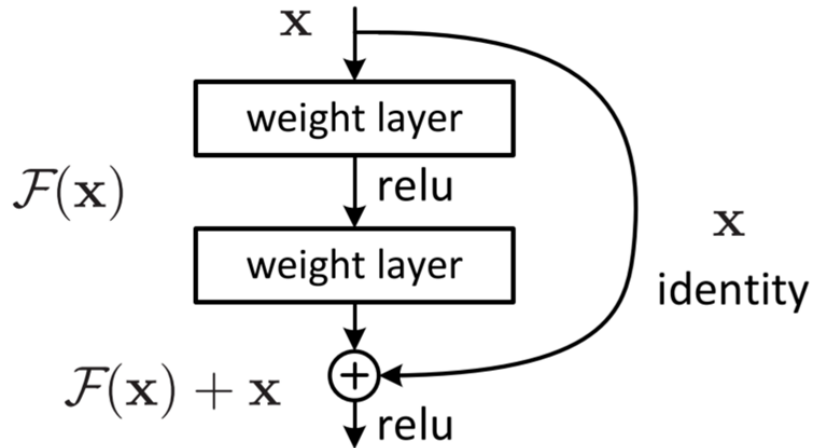
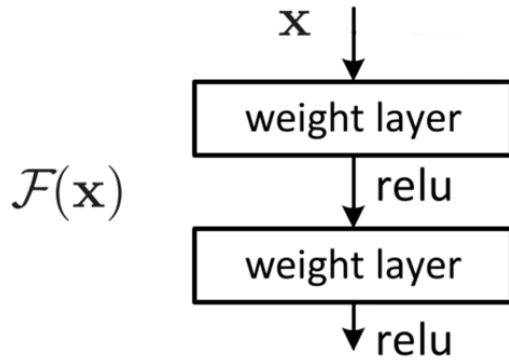
Popular CNN architectures

GoogleNet (2014) - Top-5 Error 6.67% on ImageNet



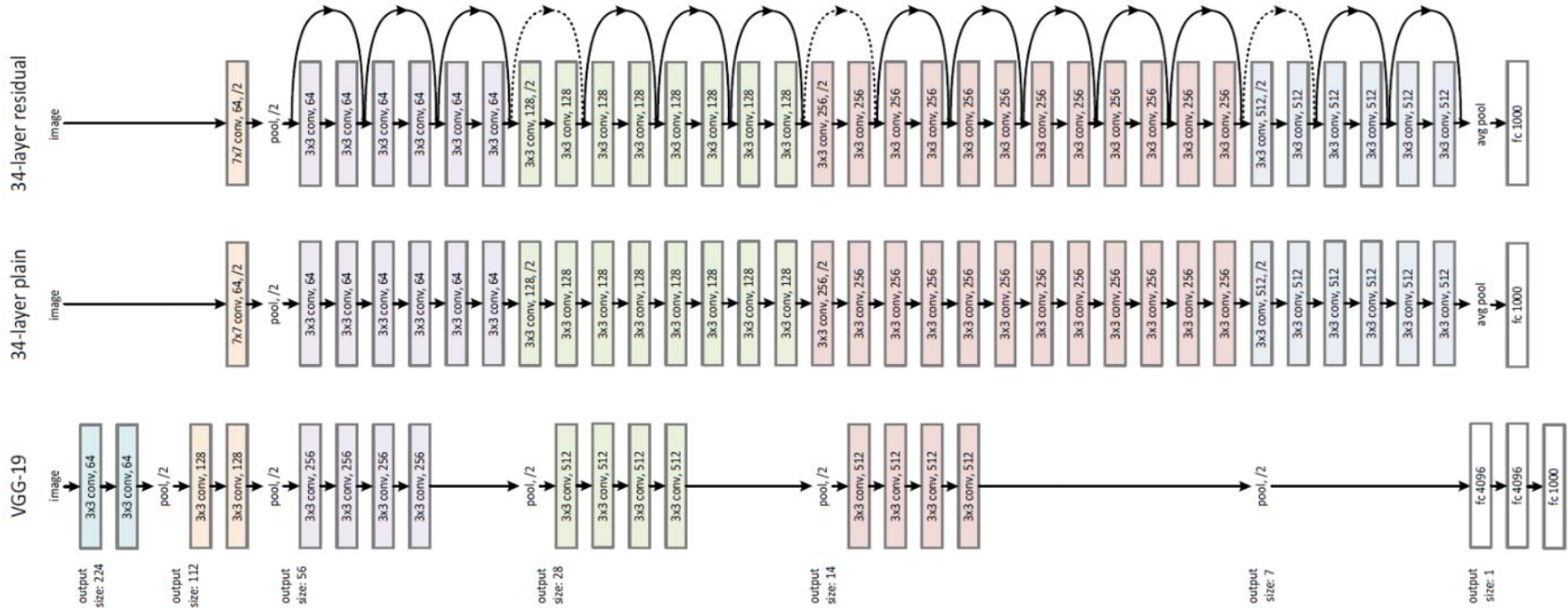
Popular CNN architectures

Residual block with a skip connection

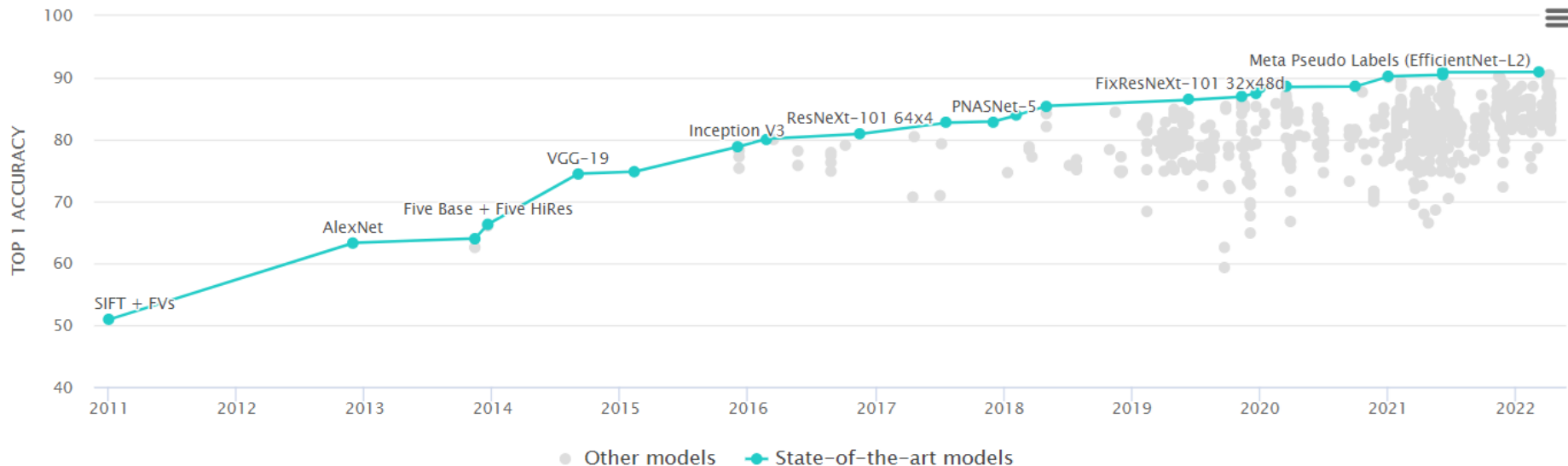


Popular CNN architectures

ResNet (2015) – Top-5 Error 3.57% on ImageNet for ResNet-152

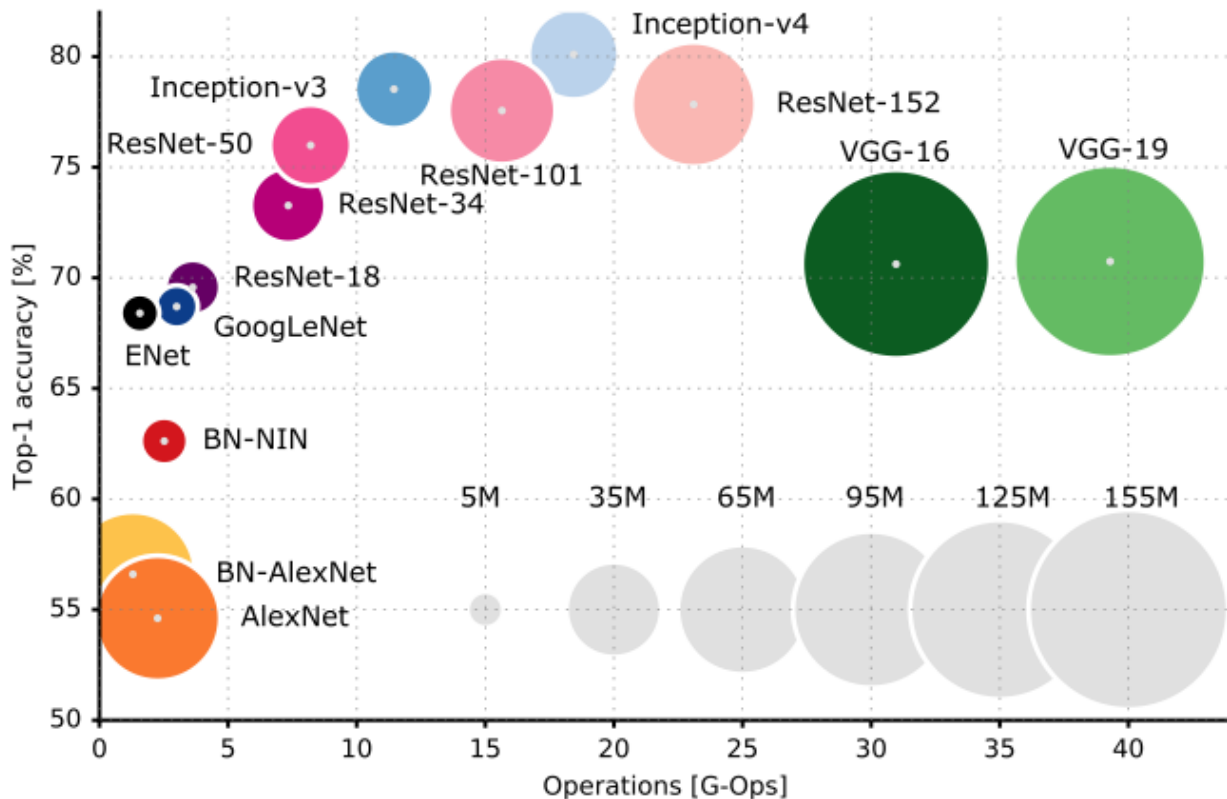


Trend of CNN-based classifiers



<https://paperswithcode.com>

Trend of CNN-based classifiers

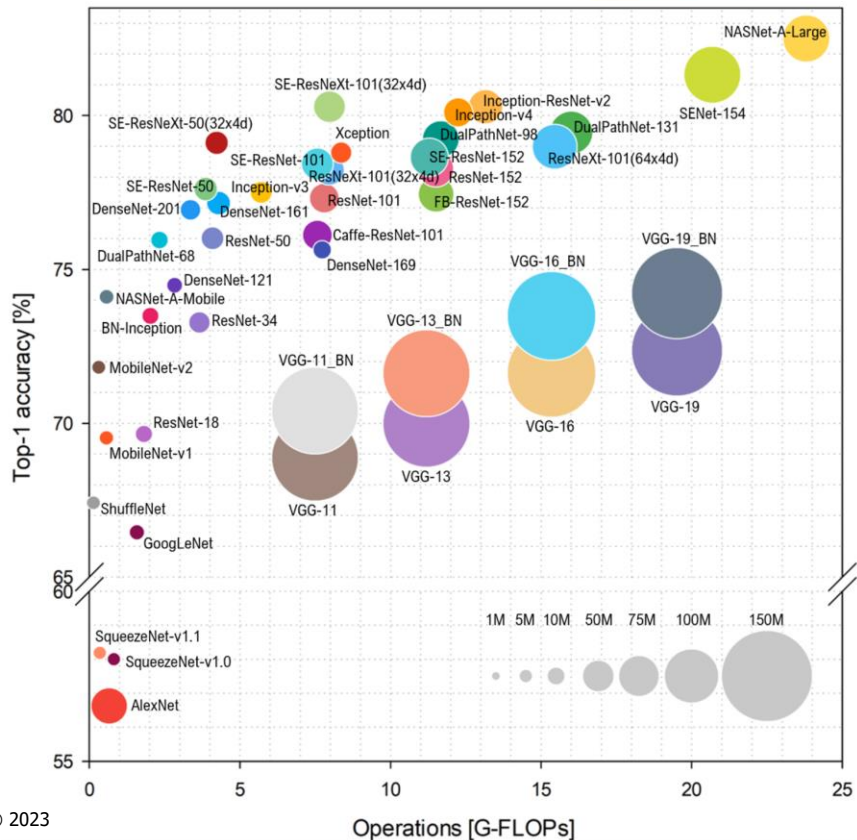


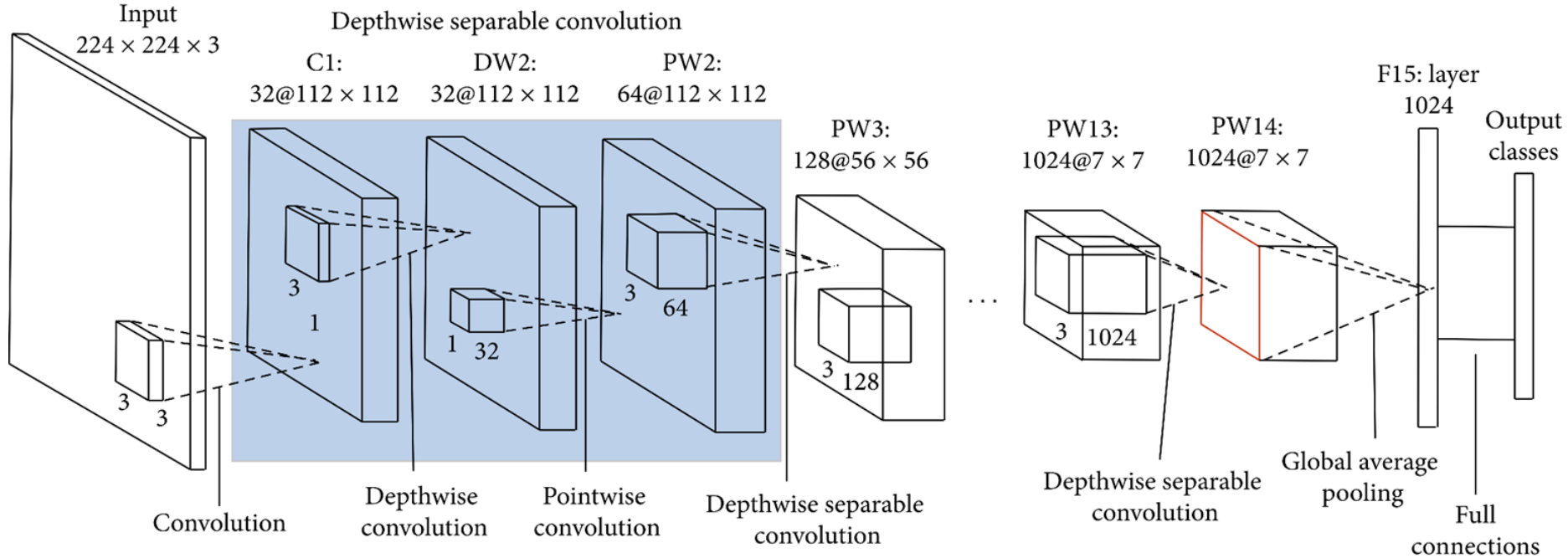
Comparison of popular CNN architectures. The vertical axis shows top 1 accuracy on ImageNet classification. The horizontal axis shows the number of operations needed to classify an image. Circle size is proportional to the number of parameters in the network.

CNNs for edge devices

What do we want on edge?

- Low computational complexity
- Small model size for small memory
- Low energy usage
- Good enough accuracy
- Deployable on embedded processors
- Easily updatable (over-the-air)





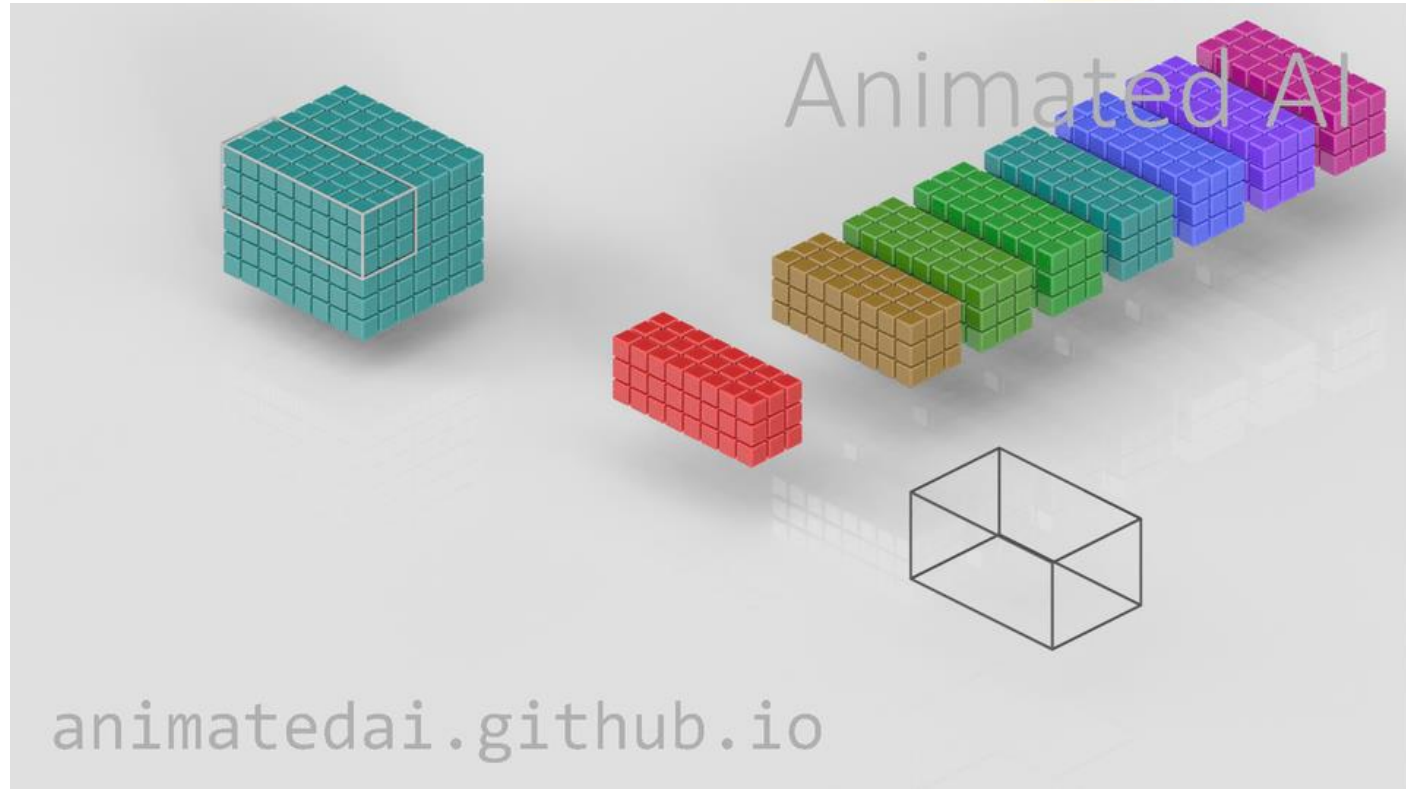
Regular convolution

Number of parameters:

$3 \times 3 \times N \times M$

N: input depth

M: output depth



Depthwise separable conv

Number of parameters:

Depthwise:

- $3 \times 3 \times N$

Pointwise:

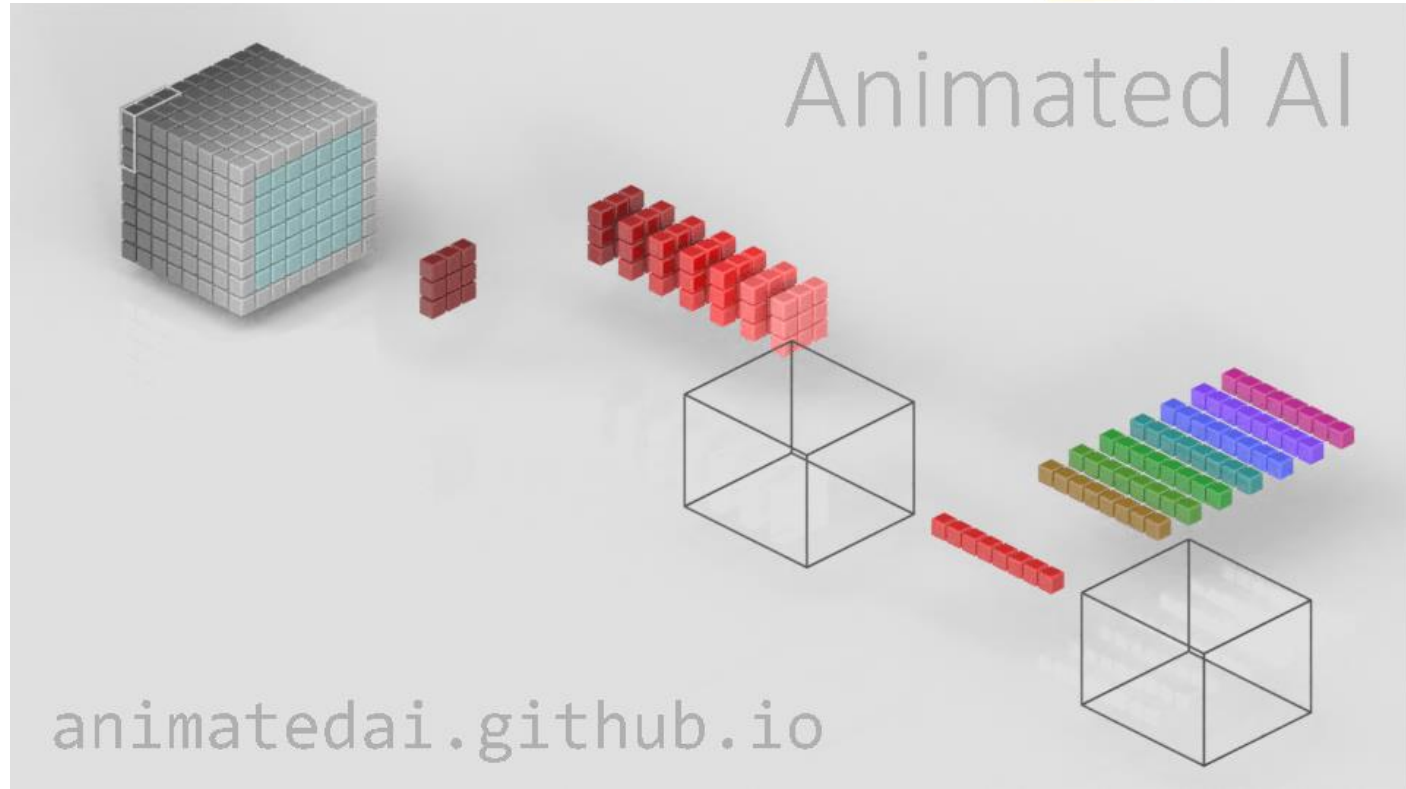
- $1 \times 1 \times M$

Total:

- $3 \times 3 \times N + M$

N: input depth

M: output depth



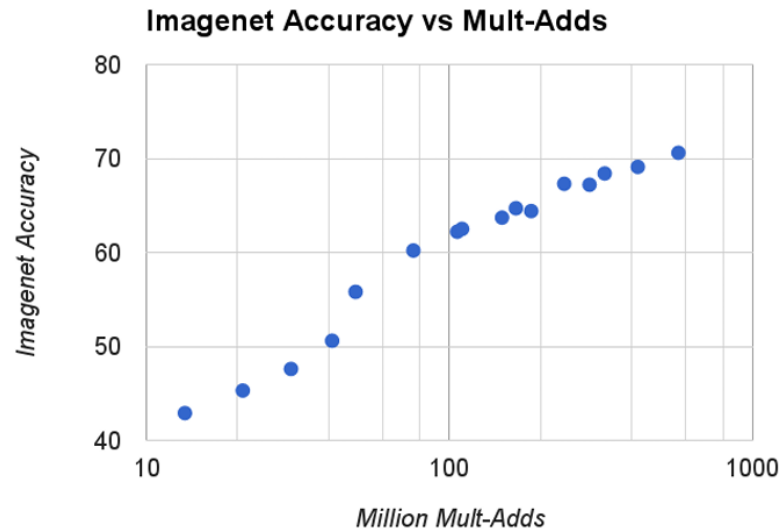
Model shrinking hyperparameter

Depth Multiplier :: Width Multiplier :: alpha :: α

To thin a network uniformly at each layer

Number of channels: $M \rightarrow \alpha M$

Width Multiplier	ImageNet Accuracy	Million Mult-Adds	Million Parameters
1.0 MobileNet-224	70.6%	569	4.2
0.75 MobileNet-224	68.4%	325	2.6
0.5 MobileNet-224	63.7%	149	1.3
0.25 MobileNet-224	50.6%	41	0.5



Log linear dependence between accuracy and computation

Let's uniformly scale network width, depth, and resolution with a set of fixed scaling coefficients

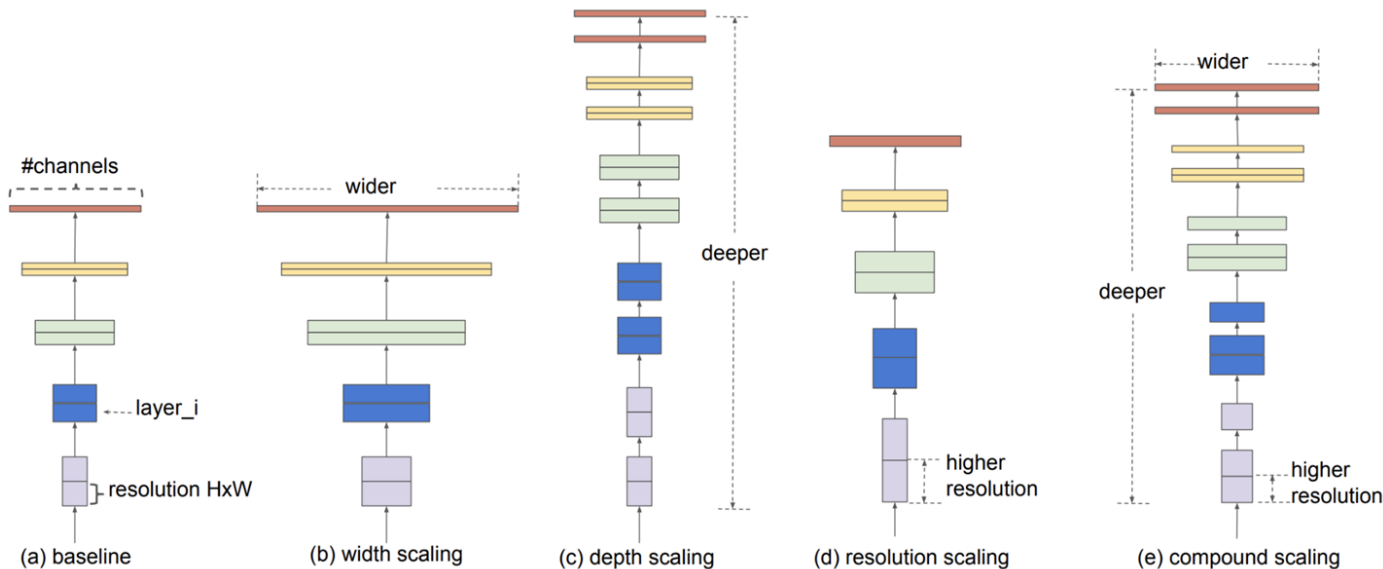
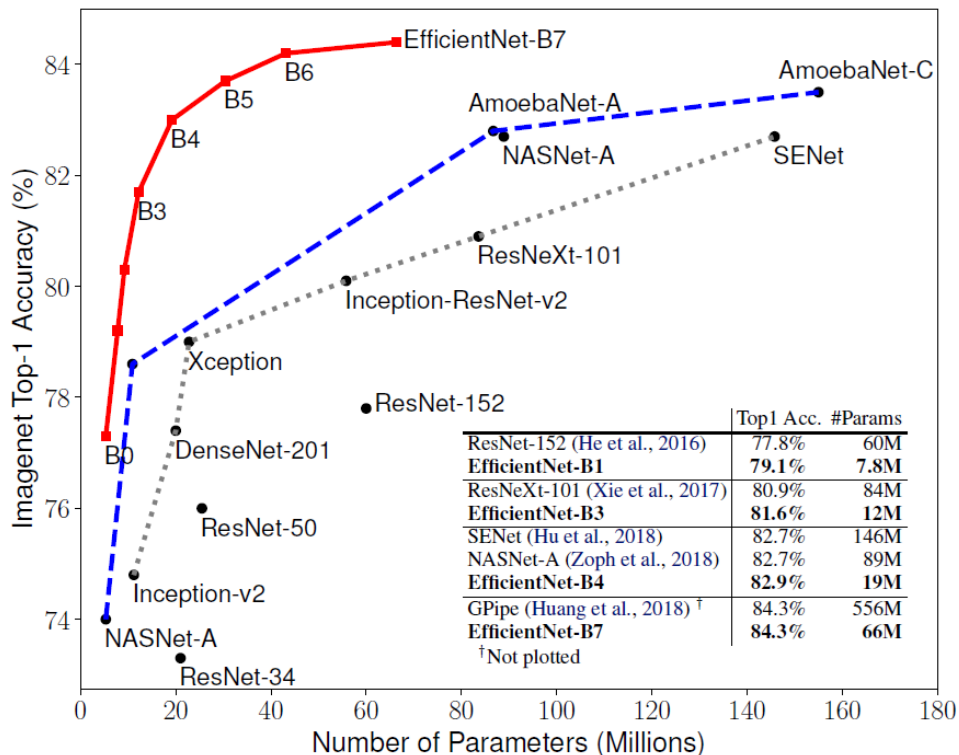


Figure 2. Model Scaling. (a) is a baseline network example; (b)-(d) are conventional scaling that only increases one dimension of network width, depth, or resolution. (e) is our proposed compound scaling method that uniformly scales all three dimensions with a fixed ratio.



Note: the baseline B0 architecture is designed using neural architecture search (NAS).

We talked about:

- Deep neural networks and CNNs as the network of choice for computer vision
- The building blocks of CNNs: Convolution layer, pooling layer, padding, stride, etc.
- Application of CNNs in computer vision: image classification, object detection, segmentation, etc.
- CNN architectures: AlexNet, VGG, GoogleNet, ResNet
- Edge-optimized CNNs architectures: MobileNets & EfficientNets

Choosing the right model for an application and hardware is crucial for accuracy and efficiency.

Any Questions?

dog: 97%



- EfficientNet: <https://arxiv.org/abs/1905.11946>
- Papers With Code: <https://paperswithcode.com>
- Understanding of MobileNet: <https://wikidocs.net/165429>
- New mobile neural network architectures <https://machinethink.net/blog/mobile-architectures/>
- An Analysis of Deep Neural Network Models for Practical Applications: <https://arxiv.org/abs/1605.07678>
- Deep Learning Equivariance and Invariance: <https://www.doc.ic.ac.uk/~bkainz/teaching/DL/notes/equivariance.pdf>
- IndoML Student Notes: Convolutional Neural Networks (CNN) Introduction: <https://indoml.com/2018/03/07/student-notes-convolutional-neural-networks-cnn-introduction/>
- Beginners Guide to Convolutional Neural Networks: <https://towardsdatascience.com/beginners-guide-to-understanding-convolutional-neural-networks-ae9ed58bb17d>
- A Comprehensive Guide to Convolutional Neural Networks: <https://towardsdatascience.com/a-comprehensive-guide-to-convolutional-neural-networks-the-eli5-way-3bd2b1164a53>